

Ideal Liberal Communal Spending

Help, don't harm!

Defend your own!

Ideal Conservative Communal Spending

Public funds:

Welfare, health insurance and social and educational programs that break cycles of neglect, abuse and violence are owed to those in need. Academic research in related issues is supported. The wealthy should give back through progressive taxation.

Charity:

goes to the needy (who cannot help themselves).

Foundations:

Liberal funders do not support liberalism. Support does not go to intellectuals (who can help themselves), but directly to the needy (who cannot help themselves)

Foundations:

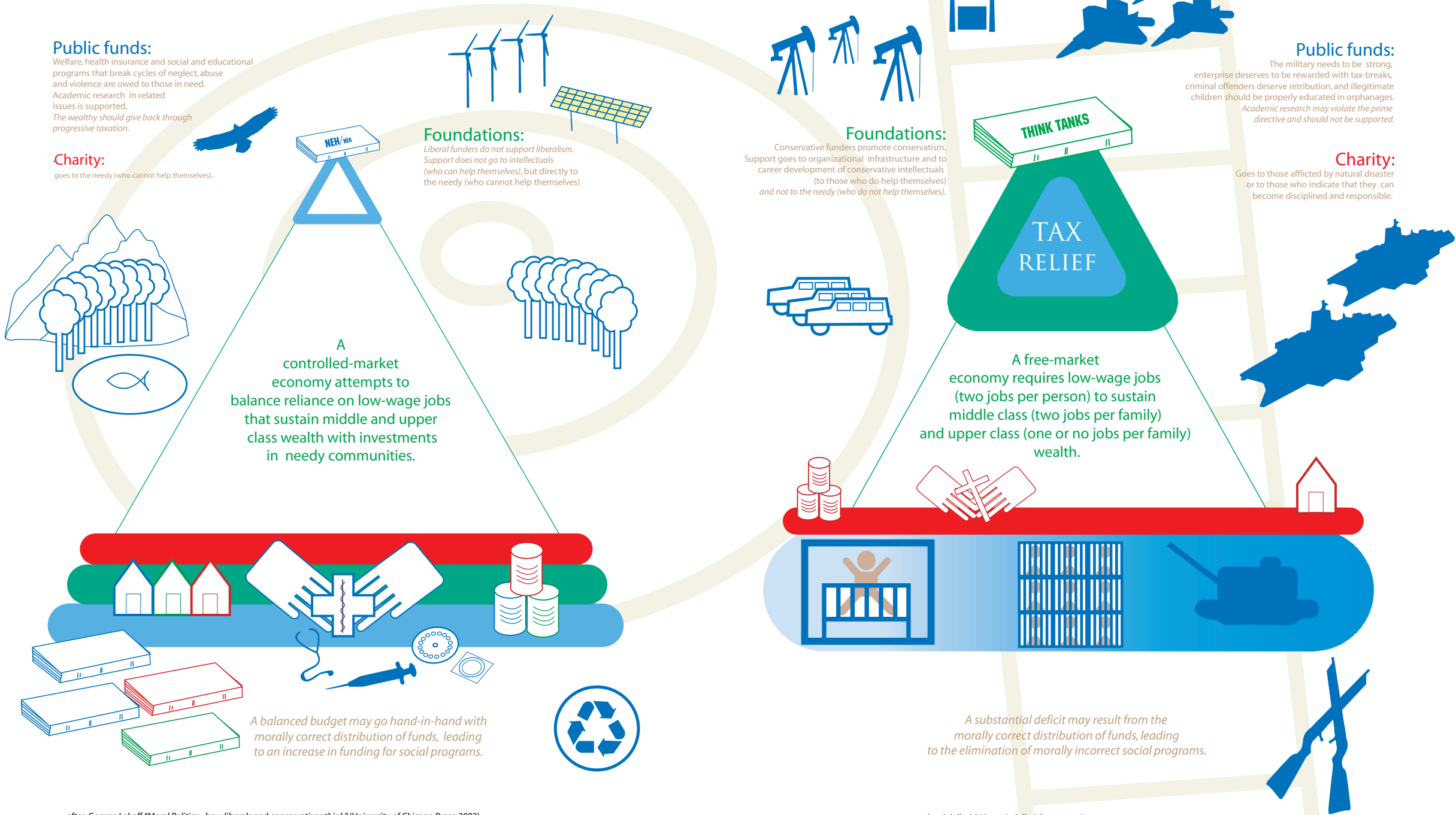
Conservative funders promote conservatism. Support goes to organizational infrastructure and to career development of conservative intellectuals (to those who do help themselves) and not to the needy (who do not help themselves).

Public funds:

The military needs to be strong, enterprise deserves to be rewarded with tax-breaks, criminal offenders deserve retribution, and illegitimate children should be properly educated in orphanages. Academic research may violate the prime directive and should not be supported.

Charity:

Goes to those afflicted by natural disaster or to those who indicate that they can become disciplined and responsible.



A controlled-market economy attempts to balance reliance on low-wage jobs that sustain middle and upper class wealth with investments in needy communities.

A free-market economy requires low-wage jobs (two jobs per person) to sustain middle class (two jobs per family) and upper class (one or no jobs per family) wealth.

A balanced budget may go hand-in-hand with morally correct distribution of funds, leading to an increase in funding for social programs.

A substantial deficit may result from the morally correct distribution of funds, leading to the elimination of morally incorrect social programs.

after: George Lakoff "Moral Politics - how liberals and conservatives think" (University of Chicago Press, 2002)

by: Adelheid Mers (adelheidmers.com)